

SKULL KID  
HAT TUTORIAL  
-LEGEND OF ZELDA  
MAJORA'S MASK-

BY MDA COSPLAY

# MATERIALS

Craft foam	Hot glue gun & sticks
Craft foam hat	Orange spray paint
Craft dowels	Scissors
Jute/cord/string	Pen
Paint in brown & black	Paintbrushes



Most of this pictured above you can buy at any dollar store.  
Go to Michaels for the spray paint and craft foam hat.

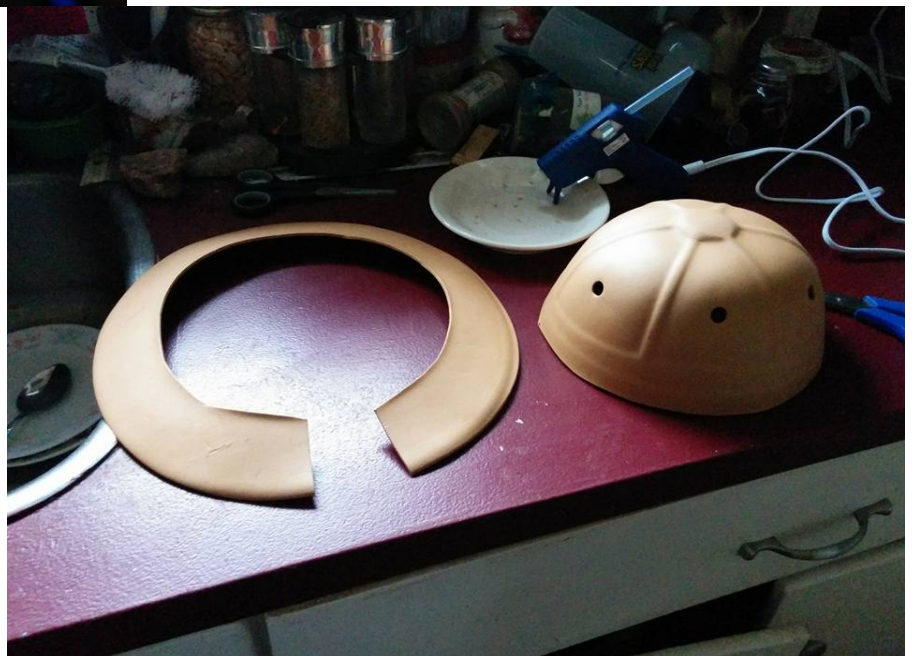
# STEP 1: CUTTING THE BASE



First thing you're going to do is cut the brim off your base hat.

Try to cut as close to the bend as you can. If you need to you can go back and trim away more of the craft foam afterwards.

At the end, your hat should appear like below.



# STEP TWO: THE BROKEN BRIM

You have some freedom here to have the brim pieces as long as you want, on my hat I made them all the same width with slight variations in width at the end (away from the base).

They should all be relatively the same length & width, it's up to you. My hat personally had 9 total brim pieces, as the hat shouldn't look even.

You'll need to cut DOUBLE the amount of what you'll have, you'll see why soon enough. You should have similar to what I had below when you're done:

I also marked which end was going to go to the base of the hat itself. I think this took 3-4 sheets of craft foam.

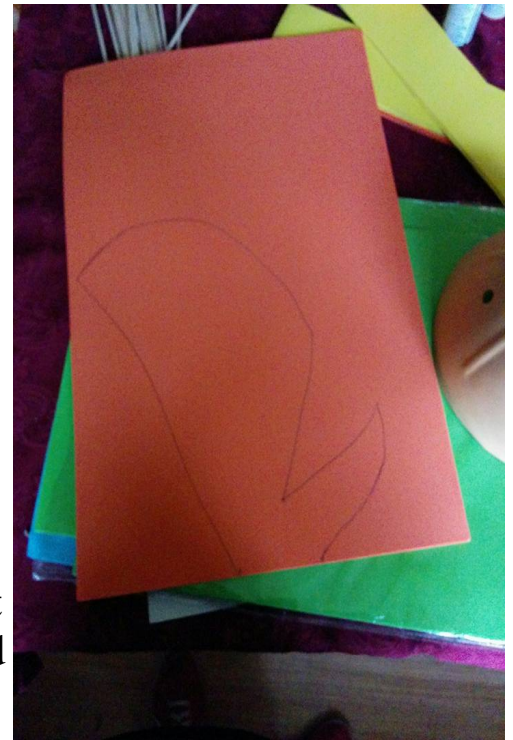


# STEP THREE: THE PEAK, PART ONE



This part is of course going to be open to interpretation a bit more. It should take you one sheet of craft foam to make the 'peak'.

This was the start of mine ->



I added in curves and dips based on the images I could find until I got a shape that I liked for my hat. You can do it however you wish, but I found this worked best for me.

<- This was the shape I decided I liked and what I decided to go with. You can do it differently to suit how you want it to look.



# STEP FOUR: THE PEAK, PART TWO

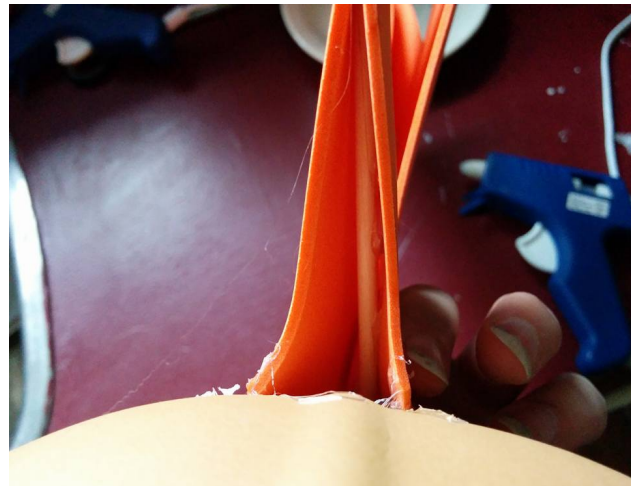


You're definitely going to thank me for this. This was my second time making Skull Kid's hat so I learned from the first time around. The first one did not have a support in the peak, which resulted in it 'breaking' and falling over. Use one of your craft dowels to help strengthen your peak. Put one in the front, and if you so desire, add one to the back for that bit of added support. It'll

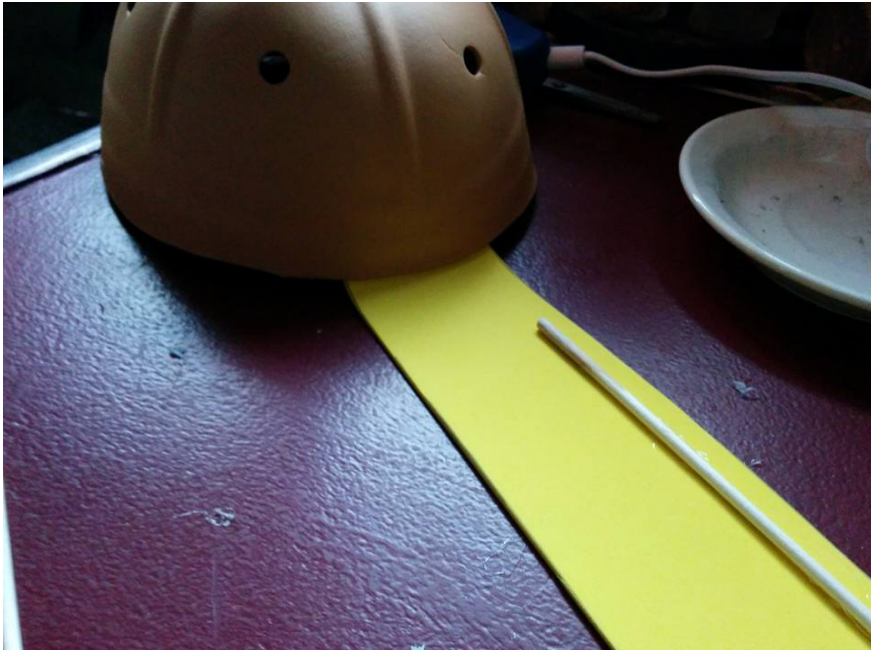
pay off.



Next, hot glue the peak in the centre of the base of your hat. Use a LOT of hot glue! You'll add more support later, but for now, use it on the inside and outside.



# STEP FIVE: BRIM



To start the brim, glue your first pieces under neath the base of your hat. You're going to want a decent amount of hot glue, and patience – as it could slip while it dries. So hold it!

You can either do all the brim pieces going around before adding the dowels, or do the following one at a time.

Remember I said about cutting double the amount of brim pieces to what you'll need? This is why. Use 1-2 craft dowels for each brim piece to support it to keep it 'stiff', or else it'll flop over.

After you've attached those with hot glue, take another brim piece, and glue it over top, start at the end as shown and go along the edges to glue it on, eventually resting it on top of your base hat.





Your brim pieces should look something like this when you've been attaching them.

Eventually, your hat should look something like this after you have finished every brim piece.

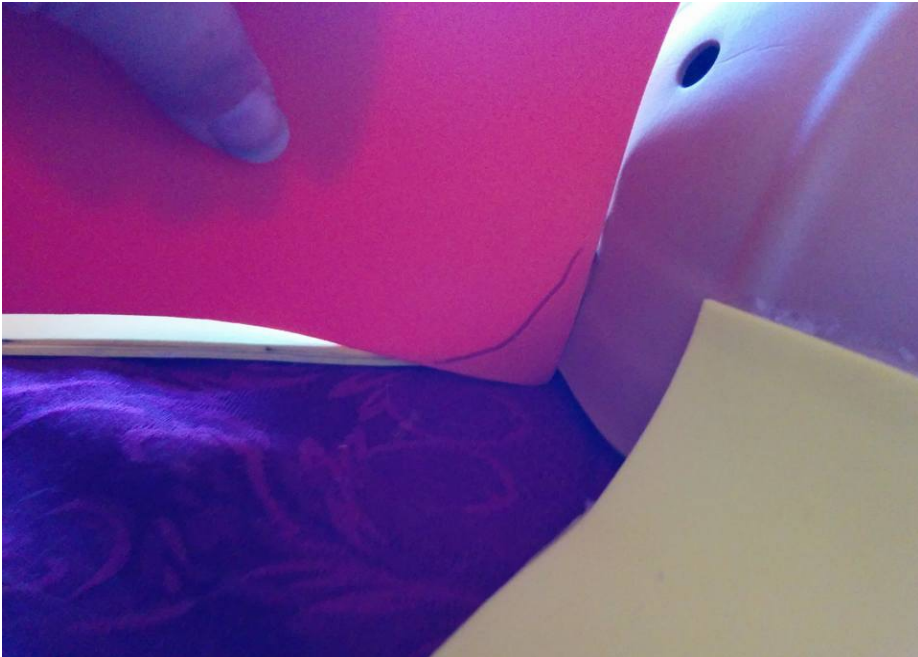
This is actually one of the most time consuming parts is attaching all 18 brim pieces with their internal supports to keep them stiff. This process took me perhaps a couple of hours to make sure they were all lined up properly and sturdy.

You'll notice all the little gaps there at the base of your hat between the pieces, we have left those for a reason, it helps the support to keep the brim pieces sticking straight out!





# STEP SIX: BRIM SUPPORT



You don't have to do it this way but I found it worked, was to take leftover pieces of my craft foam, and carefully mark out the size/shape of each gap.

I wish I did these one at a time and hot glued each piece in place after cutting them out. Each gap is going to likely be a different size and shape, so you don't want to mix them up!

I kept each piece near where I had cut it out initially, and made sure to get them all glued fast as possible. And yes, I did overlay my back brim pieces a bit on my base hat whereas my front ones are more spaced out.



# STEP SEVEN: MAIN COVER



You were probably wondering about covering up the holes right? Truthfully this part takes some extra creativity and it took an entire sheet of foam for this part for me, as you can see I just cut a slit for it to go on and a hole for the peak. The whole thing was secured down with hot glue.

You may need to make added slits or darts to make the foam fit to shape. It should be roughly like this when you're finished. -->>

On to the fun part, PAINT!



# STEP EIGHT: PAINTING



In seriousness, I really should have primed this, but I didn't... lesson learned! Needless to say, prime it before you paint!

I used spray paint in pumpkin orange for my hat. Spray paint gives it a faster and smoother finish I found. Make sure to follow the instructions on the can, trust me, you do get better results following the instructions.

I did about 2 coats on both the top (pictured) and bottom of my hat. Making sure to also get inside the 'peak'.

Your hat should roughly resemble this once you're finished with at least your first coat of spray paint. Remember, I didn't prime/seal mine like I should have!

Remember, make sure to do this in either a well ventilated room or outside. Personally I do my spray painting entirely in my family garage – outdoors, ventilated, and protected from wind and things falling on it like leaves.

Once your spray painting is dry, you're ready



for your accent painting. So time for what's primarily just going to be shadows you'll be painting. This is the fun part for me!



These were the paints that I used for my Skull Kid hat. Black, orange spice, and brown.

I recommend for this to lay down either tin foil (seen in this and following photos) or wax paper so you can freely paint your hat's accents & mix your paints right there without having to worry about a bowl or

palette spilling over.

Main places you'll want to add your accents to are as follows:

- Under the main body
- At your creases on main body
- Curve of the brims
- Base of the brims
- Base of the peak
- Inside the peak
- Any extra details you feel you need

Since this is for Majora's Mask Skull Kid, it doesn't necessarily need to be neat and tidy. You can have the painting messy, and even very dark if you so choose. I went with mild colours and messy look to match the rest of my costume. Image on next page shows good accent spaces indicated above.



# STEP NINE: RINGS



Since these were already made from the first time I made my Skull Kid hat, I can't show the process for making these, but I can give a quick run through on how my mother and I had made them.

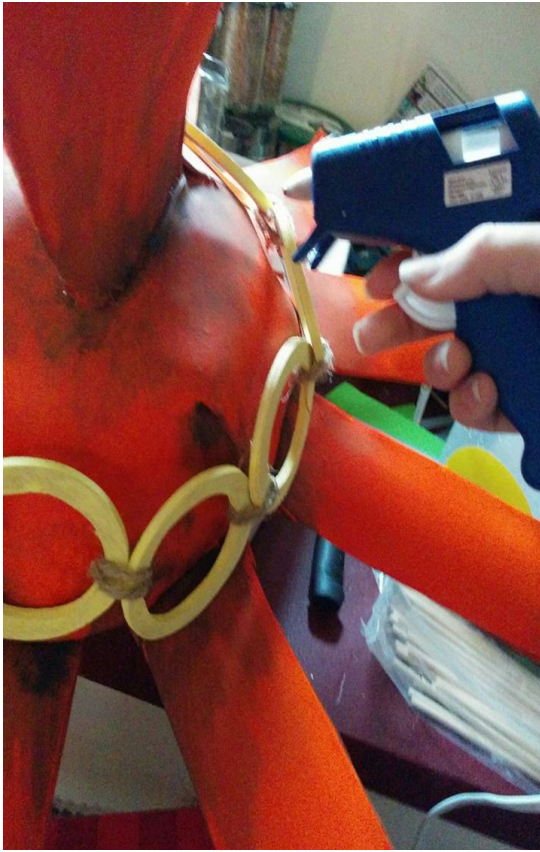
The rings were made of plywood and we used two different sized glasses to make the inner and outer sizes of the rings. We cut them out

on my mother's scroll saw. We made sure that they were going to fit comfortably over the top of the hat. This is a perfect fit what I have with nine rings on it. They were painted on one side with a pale yellow paint. I used jute around each ring and it's hot glued in place.

So you'll want to toss your hat rings onto your hat. Although obviously not quite like this, though it is rather comical. But make sure it fits alright, if need be take out a ring or add one or space them out a little bit using your jute. Getting it right can be hard and there is no shame in that.



Next, you're going to want to break out that hot glue gun again. Yes, you're using an awful lot of hot glue for this, but it's cheaper and faster than contact cement. And also it's less toxic than contact cement as well.



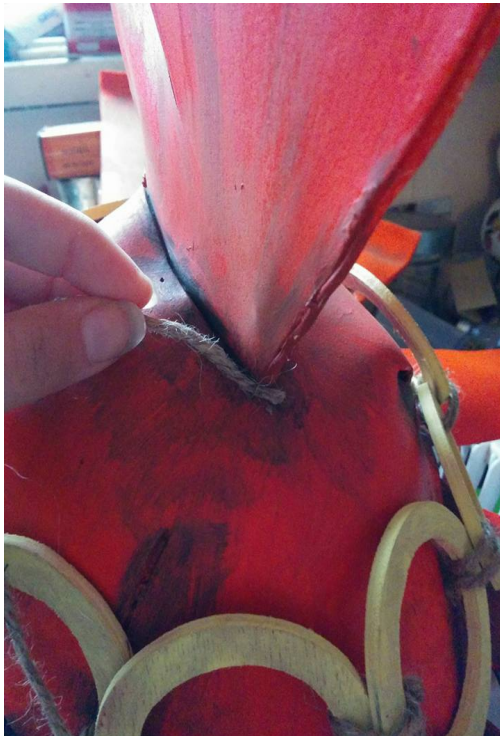
Hot glue first in the back, then front, and various points on the sides. You don't need to hot glue every last inch, it will stay on really well if you at least apply the glue at what would be considered the 'anchor points'.

By now your hat should be looking something like what is shown on the right. Looks like Skull Kid's Majora's Mask hat right? Still missing something though and it's the absolute final touch.



Do you know what that final touch is? No? Look at the base of the peak. Something missing. Cord/jute! Just like what has been

used to 'tie' the rings together. That is your final detail to add.



So take your jute/cord again, and add a small dab of hot glue at the very start, and hot glue in various points as you go. Like the rings, you won't need to do it the entire way. But make sure to hot glue the entirety of your last wrapping. You can wrap the cord as many times as you like, I did about 4 times on my own hat for Skull Kid to get it how I wanted.

And you're done!

Now enjoy your Skull Kid hat!

